

Thank you for purchasing the FUNN CROSSFIRE STEM.

Please carefully read these instructions before attempting to install this item. It is essential to follow all fitting instructions sequentially to comply with FUNN's warranty policy. If you have any questions, please consult a bike mechanic or contact us for assistance.

## TOOLS REQUIRED

- Hex key 4mm
- Torque wrench

## CONTENTS

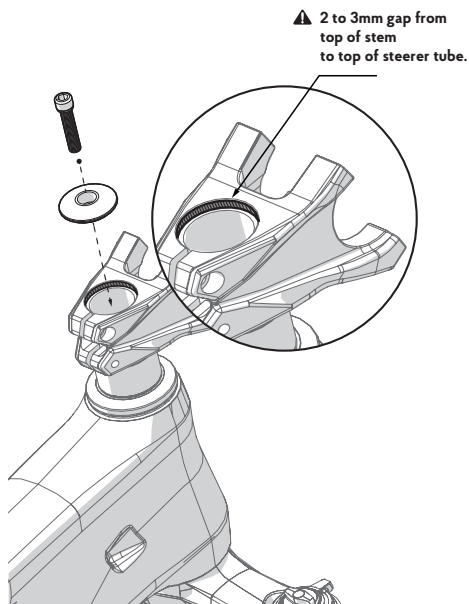
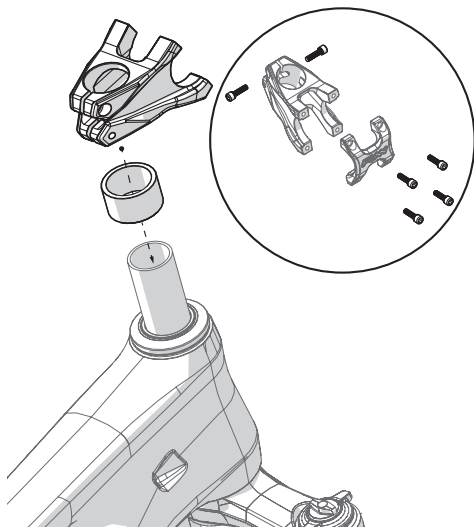
- Crossfire stem ..... 1 PC

## STEERER TUBE PREPARATION

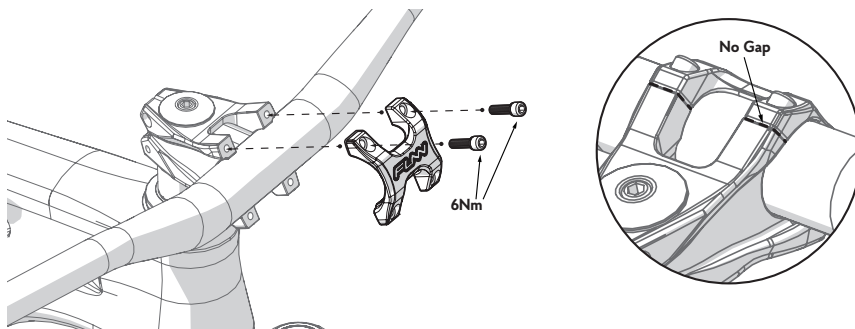
- Crossfire stem requires a 28.6mm (1 1/8") steerer tube.
- ⚠ Ensure the steerer tube is the correct length – there should be 2-3mm gap from the top of the spacer or stem to the top of the steerer tube. If cutting the steerer tube is necessary for proper fitting, ensure the cut is straight and level.

## STEM INSTALLATION

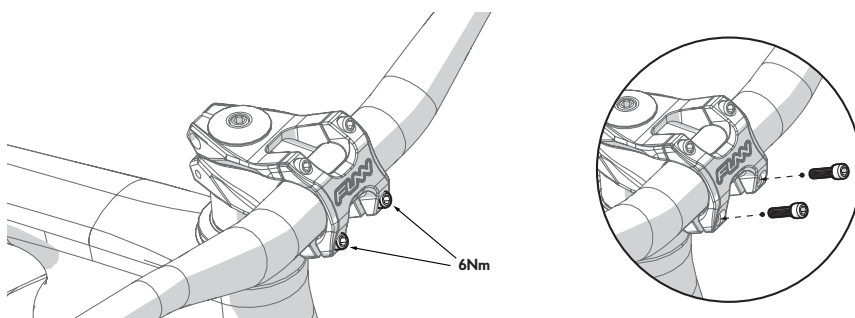
1. Remove all bolts. Grease the threads and under the heads.
2. Ensure the external surface of the steerer tube is both clean and dry. Slide the stem onto the steerer tube, ensuring you use the proper number of spacers for correct fitment.
3. Fit the top cap and tighten the headset pre-load bolt to remove any play while keeping the steering smoothly.



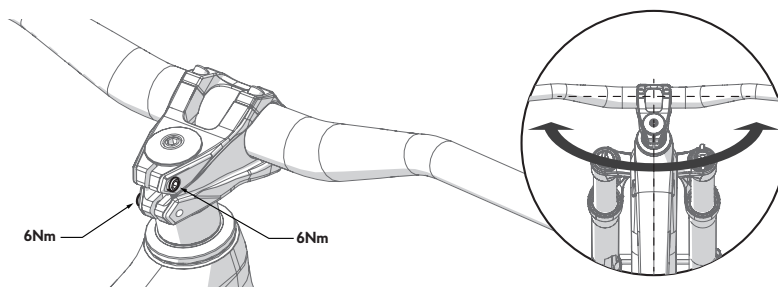
4. Install the handlebar and position the clamps, ensuring the “No Gap” markings on the clamps are at the top. Adjust the handlebar to the preferred position, then tighten the top clamp bolts to 6Nm and leave no gaps on top.



5. Tighten both lower clamp bolts to 6Nm or the recommended torque from the handlebar manufacturer.



6. **⚠️ Insert the steerer clamp bolts. Align the stem to the front wheel and then tighten the stem bolts to 6Nm. Make sure the stem bolts are tightened before riding. Riding with a loose stem can result in serious accidents.**



## ⚠️ WARNING

Please check the torque for all the bolts twice a year. Please also inspect the stem and handlebar for damage and visible cracks. If any damage, please stop using the part. It should be replaced immediately. Failure to do so may result in serious injury.