

Thank you for purchasing this set FUNNDAMENTAL PEDALS.

Please read these instructions thoroughly before attempting to install this item.
Proper installation is required for compliance with FUNN's warranty policy.

TOOLS REQUIRED

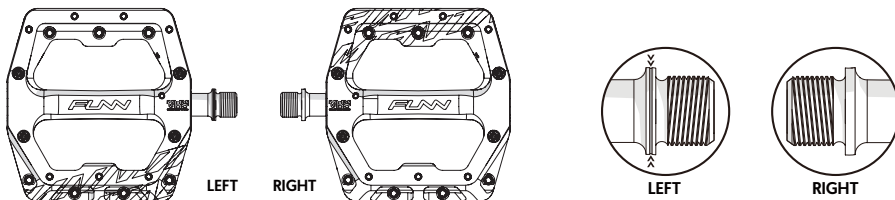
- Hex key 2mm
- Hex key 3mm
- Hex key 8mm
- Socket wrench 4mm

CONTENTS

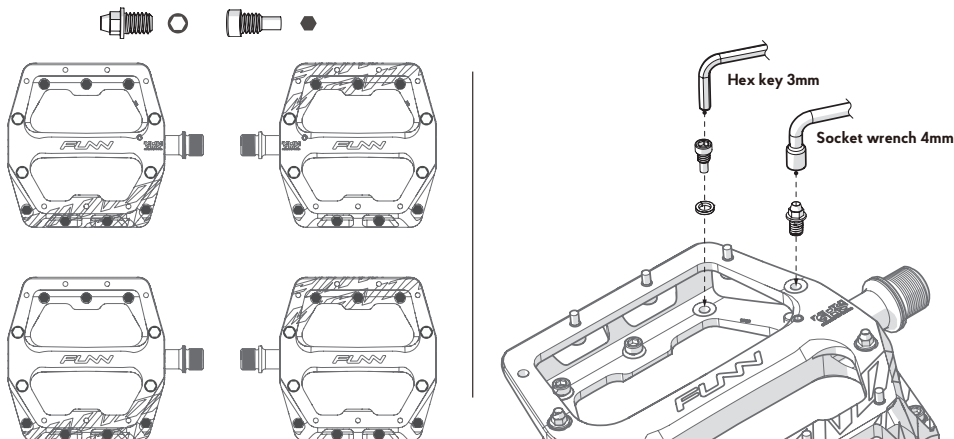
- | | | | | | |
|------------------|-------|--------|---------------------|-------|------|
| · Pedals | ----- | 1 SET | · Hex key 3mm | ----- | 1 PC |
| · Traction pins | ----- | 16 PCS | · Socket wrench 4mm | ----- | 1 PC |
| · Traction bolts | ----- | 28 PCS | | | |
| · Screw washers | ----- | 28 PCS | | | |

PEDAL INSTALLATION

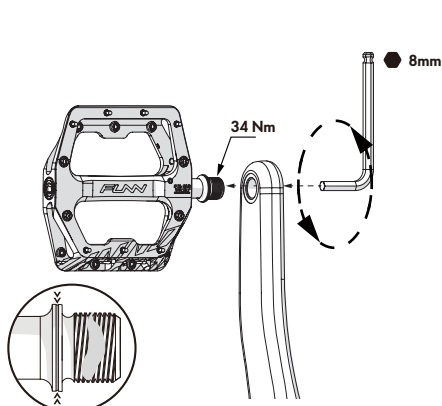
1. Identify the left and right hand side pedals. The left side pedal has a lathed mark on the axle head.



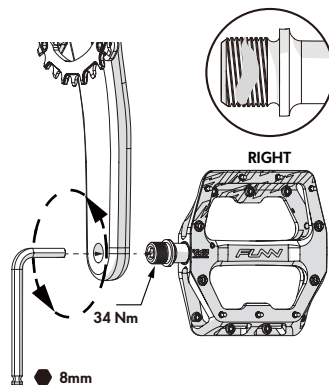
2. Install the traction bolts and pins with the 3mm hex key and 4mm socket wrench, respectively.
You can fine tune the height of bolt with the 1mm washers. Do not use more than one washer per bolt.



3. Lightly lubricated the axle thread with grease before installing onto the crankset.
4. Thread the axle into the crank hole with your fingers. Please follow the illustrated directions for tightening the left and right pedals.
5. Insert a 8mm hex key to further tighten the screw to 34Nm (300 lb-in) torque and avoid excessive force.



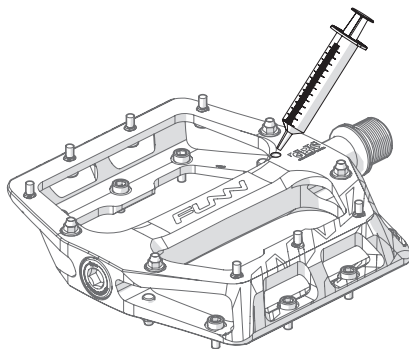
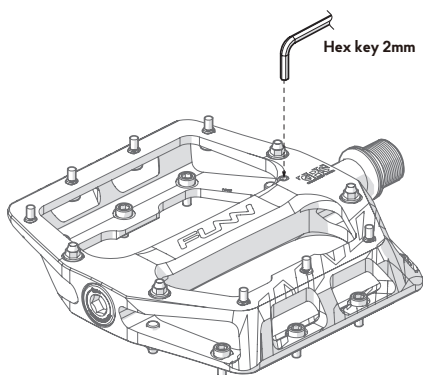
LEFT



GREASE RENEW SYSTEM

FUNNDAMENTAL features the GRS system to easily lubricate the bushing's.

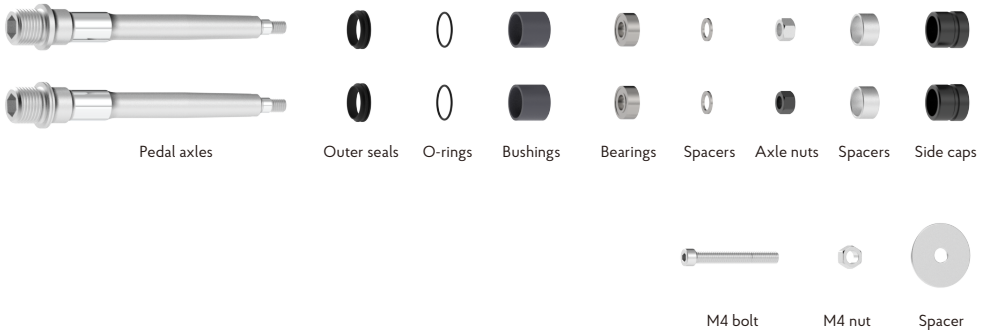
1. Use 2mm hex key to remove the GRS bolt.
2. Lubricate the bushing with a syringe and wipe off the excessive oil.
3. Tighten the bolt back on to seal the GRS port.
4. The GRS is for light lubrication once in a while, we recommend a full rebuild every 6 months.



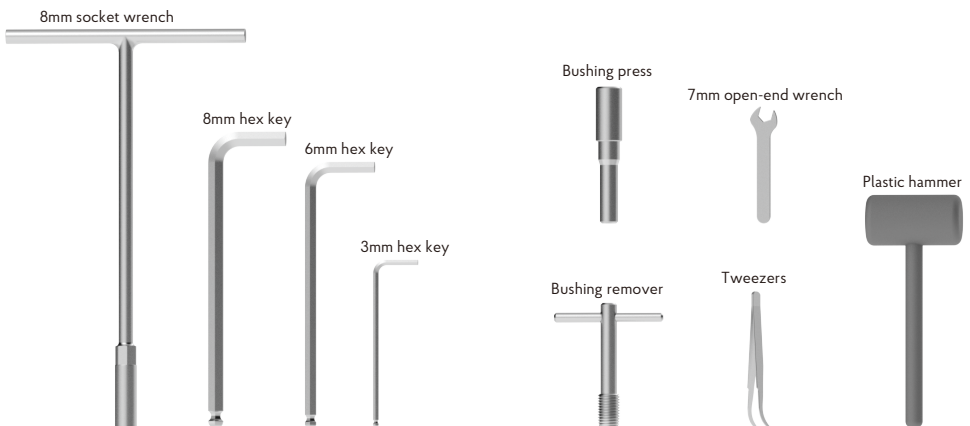
Welcome to the Fundamental Pedals Bearing and Axle Replacement Guide

Before beginning the maintenance on Fundamental pedals, ensure a seamless process by utilizing high-quality tools to avoid damaging the screw sockets. It's advisable to service your pedals one side at a time to avoid mixing up parts. Additionally, be mindful of thread directions, as indicated by diagrams on both sides of the pedal, and pay special attention when handling these specific parts.

NEW AXLE KIT

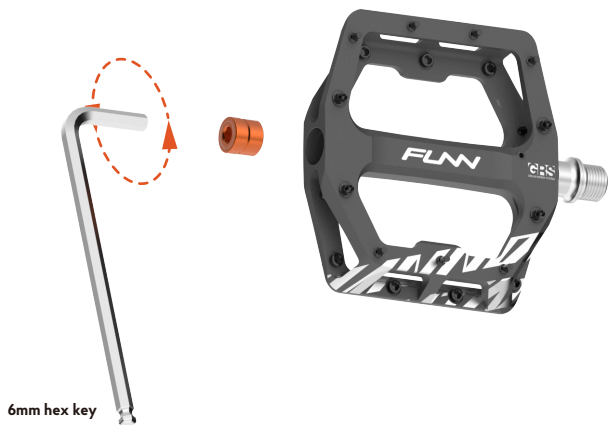


TOOLS REQUIRED



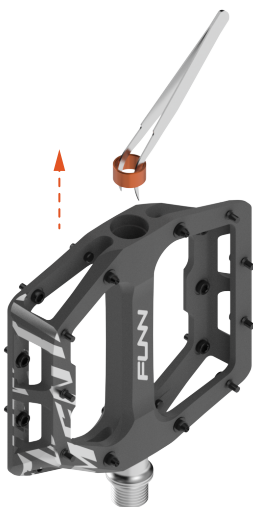
STEP 1:

Remove the side cap using a 6mm hex key.



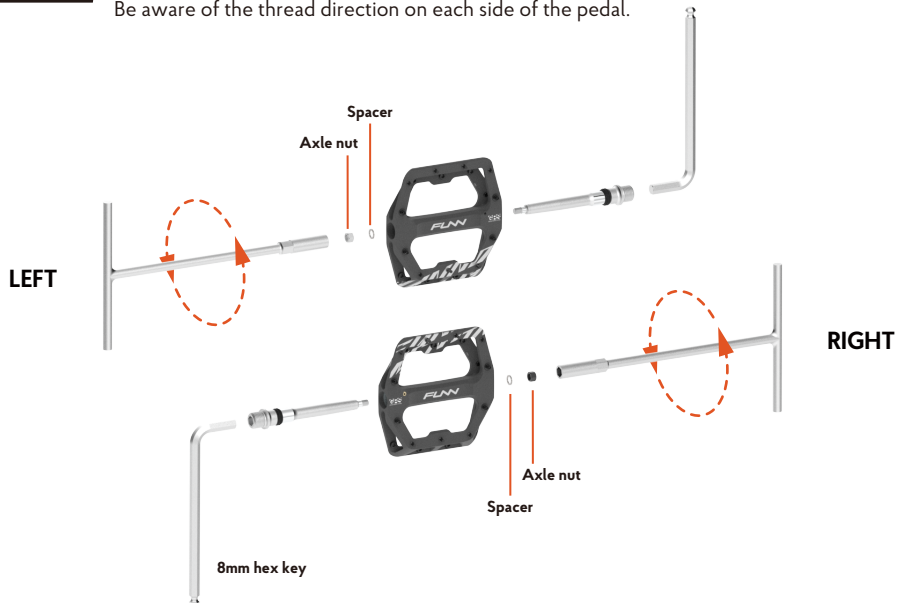
STEP 2:

Remove the spacer using a tweezers.



STEP 3:

Secure the axle with an 8mm hex key, then use an 8mm socket wrench to loosen the axle nut. Be aware of the thread direction on each side of the pedal.



STEP 4:

Inside the axle bore, you'll find an o-ring. Use tweezers to gently remove it.



STEP 5:

To extract the bearing from inside the pedal, start by inserting an M4 bolt into the pedal body with a 3mm hex key. Then, fit a washer and M4 nut onto the M4 bolt.



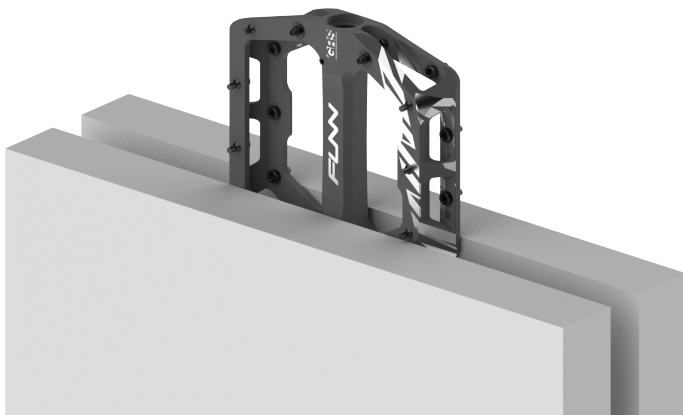
STEP 6:

Secure the M4 nut with a 7mm open-end wrench, and use the 3mm hex key to tighten the M4 bolt. Continue tightening the M4 bolt until the bearing is extracted.



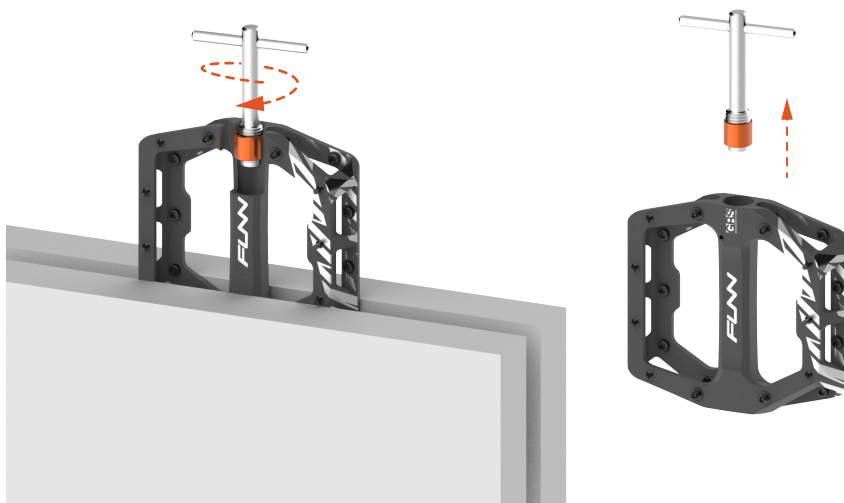
STEP 7:

To extract the bushing from the pedal body, secure the pedal body in a vise. It's advisable to place a cloth between the pedal body and the vise to protect the pedal's surface.



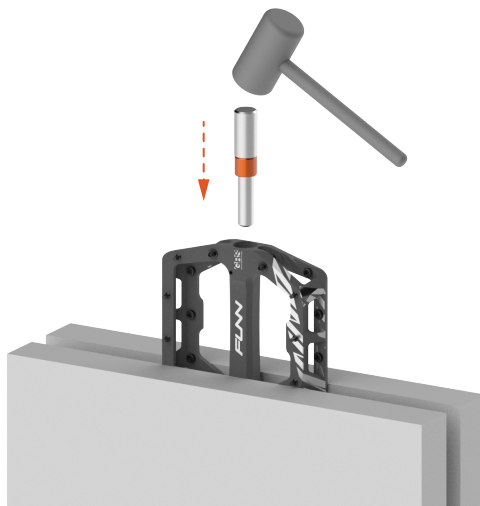
STEP 8:

Push and screw the bushing remover tool into the bushing within the pedal body. Once the remover is fully engaged with the bushing, pull it out to remove the bushing.



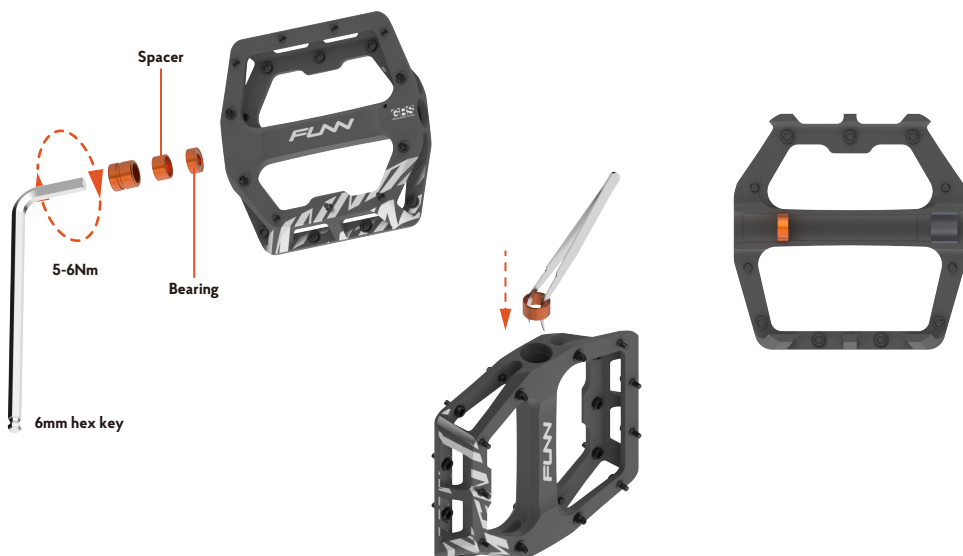
STEP 9:

Position the new bushing on the bushing press. Then, gently tap the bushing press with a plastic hammer to install the new bushing.



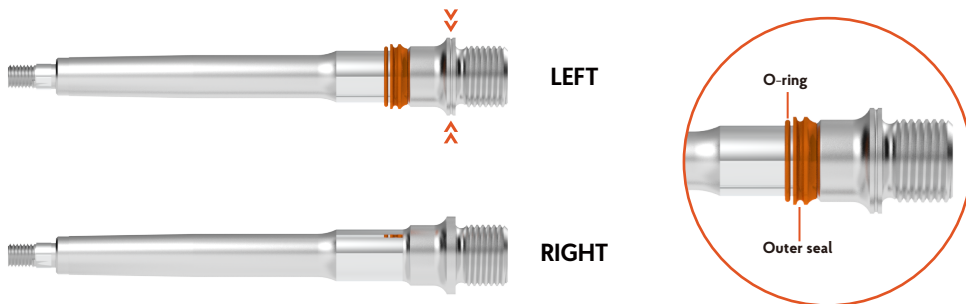
STEP 10:

Apply grease on the interface between the side cap and the bearing's outer race. Push the new bearing and spacer into the pedal by tightening the side cap into the pedal. Make sure the side cap absolutely bottoms out to make sure the bearing is properly seated. Then remove the spacer using a tweezers.



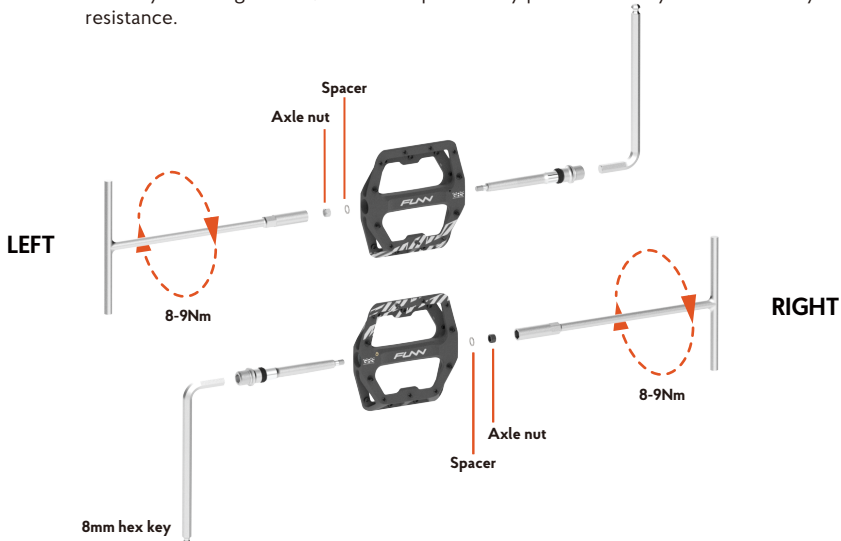
STEP II:

Identify the left and right-hand side axles. The left-side axle has a lathed mark on the axle head, whereas the right-side pedal has no markings. Fit the new outer seals and o-rings onto the axle, paying attention to the orientation of the seals. Then, apply grease to the areas of the axle that come into contact with the bearing and bushing.



STEP I2:

Insert the pedal axle into the pedal body, holding the axle head steady with an 8mm hex key. Next, tighten the axle nut using an 8mm socket wrench. Remember, the silver nut corresponds to the right side axle, while the black nut is designated for the left side axle. It's important to note that the thread directions differ on each side of the pedals. After securely fastening the nut, ensure the pedal body pivots smoothly and without any resistance.



STEP 13:

Insert the spacer around the axle nut in the pedal body.



STEP 14:

Reattach the side cap using a 6mm hex key. After installation, check that the axle rotates smoothly and is free from any side-to-side movement.

